



Enriching, Encouraging, Empowering

## Message from The Principal

This week we learned of the passing of young Zoe. Her funeral is being held today with some of our staff attending. We send our condolences and thoughts to her family at this time. I understand that there has been a give a little page set up to support the family and if you would like to contribute in this way the link is located in the newsletter.

Senior swimming begins on Monday next week. This year our children will be traveling to Moana Pool for their lessons. This has added considerable cost to attending swimming and therefore this year we will only be doing one week of swimming lessons. It is really important that children remember to bring their swimming togs everyday so that they don't miss any of these sessions.

This week our Year 6 students received their senior responsibilities and their coloured hats. In the current environment these roles look a little different as we maintain our separate bubbles at school but we look forward to our senior students taking up these rolls and hope that as the year progresses they will be able to share their leadership skills across the school more widely.

The latest covid information we have received from the Ministry has clarified the identification of household contacts for children who live in more than one household.

The criteria we have been given means if your child was in a household for a period of 8 hours or more, during the 48 hours prior to the household contacts symptoms presenting or them testing positive, then they are considered a close household contact even if they change addresses and test negative themselves.

We appreciate the way families have worked with us and kept us informed when their children are identified as contacts or have been showing symptoms. Please keep us updated with any cases or testing for the children within your household.

**Chris McKinlay**  
Principal



# Welcome To Elmgrove



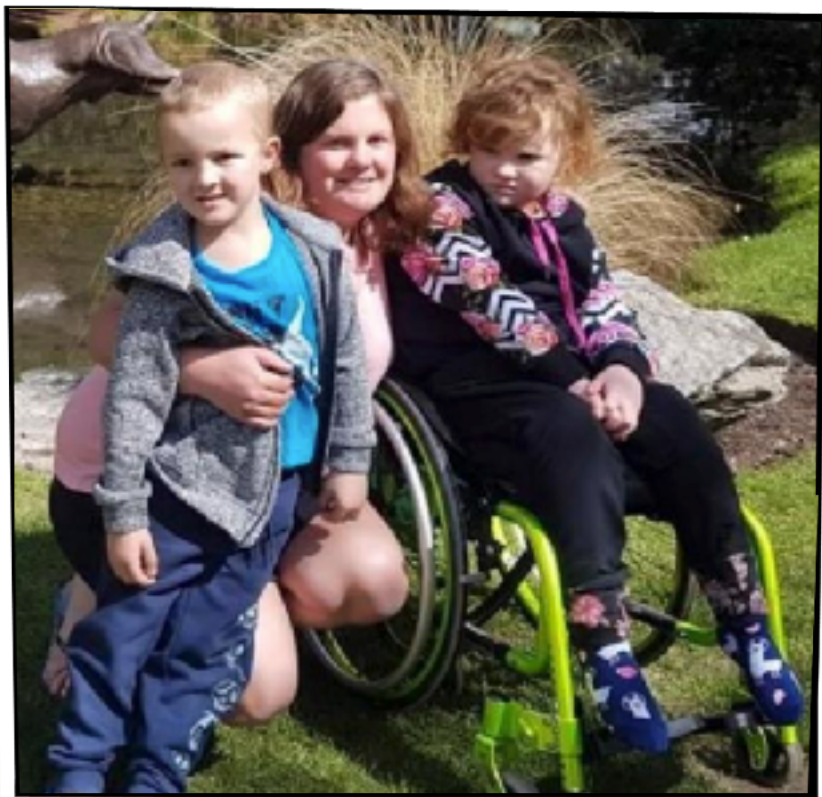
**James**



Next week it is Walk n' Wheel to school week.

Children are encouraged to walk or wheel to school.

Each child will be given a card to get stamped each day they walk or wheel to school. This will then go in the draw to win a prize.



On Friday 25th February 2022  
A mum lost her daughter her best friend her brave hero Zoe fought a battle she sadly couldn't win and lost her life to Cancer at just 7 years old Friends have set up this page to help her Mum (Sarah) and Brother (Max ) to help take the pressure off while they adjust to the loss of Zoe The funds will be used to help Sarah with anything she and Max needs, so they can focus on grieving without having to worry about her finances at this awful time.

If you would like to donate please click on the link below.

<https://givealittle.co.nz/cause/please-help-support-this-family-after-losing-zoe>

**WOW Look who has earned a school values badge this week!**

★ *Caring*  
*Mila Smith*



★ *Respect*  
*Jaxon Young*

★ *Responsibility*

*Bowie Gallop*  
*Rocco Cunningham*  
*Harriet Bloxham*  
*Beau Topping*  
*Eva Watson*  
*Nixon White*



**RESPONSIBILITY**



**RESPECT**



**CARING**



**PERSEVERANCE**



**These children have achieved  
5 Tumeke Cards this week!**



★ *Braxton O'Sullivan* ★  
★ *Tanvi Nayudu*  
★ *Gabrielle Knopp-Jenkinson*





Here is a great opportunity to purchase spring flowering bulbs and seeds to show your support.

Bulbs are easy to plant, fun to grow and will reward you with gorgeous flowers year after year.

We have some great choices here, why not try them all! Bulbs are supplied by GardenPost which source bulbs from New Zealand's & Holland's best growers. Prices offered here are less than normal retail and your organisation will make a least 30% profit on all sales. A planting guide will be enclosed with each order.

To order please fill out this google document no later than Sunday 20th March and make payment into our fundraising account.

Account information is:  
Elmgrove Fundraising Group  
03-1725-0122720-000  
Reference-Surname

Code- Childs name (If more than one child please use Eldest child's name)

Please just ONE order per family.

Delivery will be around 7th April

Thank you for supporting this fundraiser. Enquiries to: Rachel Campbell  
( [amos.rach@gmail.com](mailto:amos.rach@gmail.com) )

**ORDER FORM**

# Updated guide to self-isolation



You will need to self-isolate from others if you:

are positive for COVID-19

live with a positive case

You must isolate at home or in suitable alternative accommodation. If you test positive for COVID-19, a health professional will help you decide if managed isolation is suitable for you.

Isolate for 10 days from when you test positive

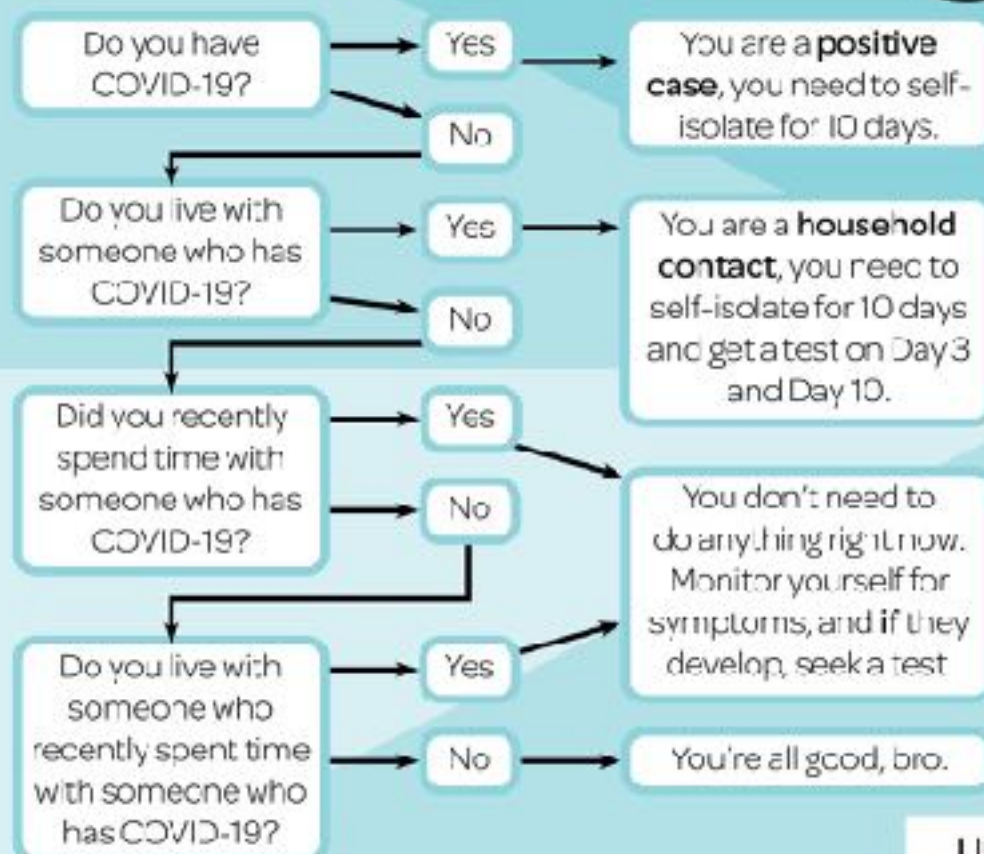
Isolate for 10 days

No further tests required unless directed to

Tests on Day 3 and Day 10

Financial support may be available - check our website to find out what you may be eligible for: [Covid19.govt.nz/financial-support/](https://www.covid19.govt.nz/financial-support/)

## What type of contact are you?



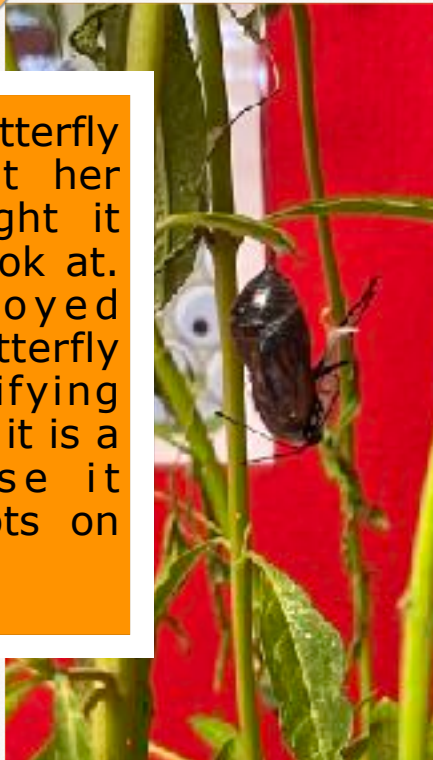


# Manuka Hub

We have loved watching our caterpillars transform into beautiful butterflies. At first we had a lot of hungry caterpillars that ate our swan plants right down to the stem. After each caterpillar grew big they turned into a chrysalis, we got to watch this happen a couple of times. The caterpillar wriggled a bit in a J shape and before long it was a chrysalis.

When the chrysalis turned black and then translucent we knew they were nearly ready to hatch. When they did we let the butterflies dry their wings before we took them outside and said goodbye and let them fly away. We had some monarch butterflies come back and fly around the outside of our Hub. We think that they were our butterflies coming back to visit!

Amiah found a butterfly in the garden at her house and brought it along for us to look at. We really enjoyed studying the butterfly with the magnifying glasses. We know it is a female because it doesn't have spots on its wings.



We have been talking about how we act in the Manuka Hub. We agree that we should respect everyone and everything in the Hub. We have made a beautiful korowai (cloak) to show that we agree to follow our class treaty.



# Manuka Hub

## Manuka Hub's Super Self Portraits

Manuka have been learning about shape and patterning in Maths and in Art. We have joined the ideas in these two areas to create Self Portraits. Here is the process and some of the final products. We love them!



Step one: We drew ourselves including the right shapes and adding detail. Then outlined with black pen.



Step two: Cut out our drawings using scissors, leaving a white border.



Step three: Using watercolour we created a patterned, bright colour background.



Step four: We glued on the portrait! Here is Fletcher's.



# Manuka Hub



Ezra's finished Portrait.



Amiah's finished Portrait.



Henry's finished Portrait.



Isla's finished Portrait.



# Whats coming up at ElmGrove.

## Important dates - (mark these on your calendar)

**Week 5 - 28th February - 6th March**

**Week 6 - 7th March - 13th March**

7th-11th March

Senior Swimming

7th-11th March

Walk and Wheel week

**Week 7 - 14th March - 20th March**

7-11th March

No Subway this week

**Week 8 - 21st March -27th March**

21st March

Otago Anniversary Day - No school today

**Week 9 - 28th March -3rd April**

**Week 10 - 4th April-10th April**

**Week 11 - 11th April-17th April**

14th April

LAST DAY OF SCHOOL FOR TERM 1

15th April

Good Friday - No school today

**Term 2 - Starts back 2nd May**

### **Term 1**

Wednesday 2nd Feb - Thursday 14th April

### **Term 2**

Monday 2nd May - Friday 8th July

### **Term 3**

Monday 25th July - Friday 30th Sept

### **Term 4**

Monday 17th Oct - Wednesday 14th Dec

## **Reporting Absences**

We have several ways for parents to advise that a child is not attending school

1. Use the Skool Loop App (Download this in your App Store)
2. Ring and leave an absence on phone line. 03-489 6252
3. Text - 0274622920
4. Email [office@elmgrove.school.nz](mailto:office@elmgrove.school.nz)

**Please make sure your absence is sent by 9.00 am**

**Also, please advise the office if your child is going to be away on holiday or away for an extended period.**

# TAIERI PLAINS JUNIOR NETBALL

AGM: Monday March 14<sup>TH</sup>

7.00pm

Taieri College Library



We need you to help us...

**Please come along!**

The Taieri Plain's Junior Netball Committee is a small group of volunteers without whom the Saturday netball games would not occur and this year more so than ever!

Most official positions have been filled, however, there are several 'vacancies' in the assistant positions which help with the day to day running of Saturday netball.

If you would like to join our committee either on an official basis or as a helping hand on Saturdays please come along on Monday March 14<sup>th</sup> 7.00pm and meet us all.

## BROWNIES IS FUN!



GirlGuiding NZ is a non-profit organisation where girls can be girls, where they will discover their passions, contribute to their communities and form friendships in a safe and positive environment. We offer a non-competitive learning environment which is open-minded and values-based. It's a supportive place to grow confident, adventurous girls who are ready to be tomorrow's leaders.

At Brownies, girls aged 7-9.5 are finding their passions and learning more independence. They can start to take charge of what they do at Brownies. Some badges require girls to work together while others let girls explore their personal interests - from science and technology to creative arts and conservation.

Here are some of the adventures waiting at Brownies:

- Sports
- Camping
- Cooking
- Craft
- Try some fun science experiments
- Get outdoors with some new friends
- Rock climbing
- And so much more!

We meet locally in Mosgiel from 5:30 to 7pm every Wednesday night and are eager to welcome new faces for 2022, if this night doesn't suit your family then check out our Explore Brownies option or there are other groups around the city! We accept girls aged 7-9.5 into our group.

If this sounds like your daughter then please either make an enquiry at <https://girlguidingnz.org.nz/join-us/> or email Melissa the Unit Team Leader at [ggnzmosgielbrownies@gmail.com](mailto:ggnzmosgielbrownies@gmail.com). Our numbers are capped so get in quick!

There are also options for girls aged 5-17, please go to [www.girlguidingnz.org.nz](http://www.girlguidingnz.org.nz) for more info.